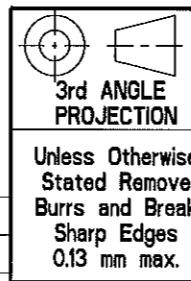


- NOTES:
1. ALL DIMENSIONS ARE NOMINAL UNLESS OTHERWISE STATED.
 2. DIMENSIONS IN BRACKETS ARE mm.
 3. THESE DIMENSIONS TO BE DETERMINED BY CUSTOMER CABLE REQUIREMENTS.
 4. 7, 14 & 19 WAY LAYOUTS EACH HAVE UNIQUE KEYING ARRANGEMENTS (N, A, B, C & D) TO PREVENT MISMATING.
 5. COLOUR CODED PAINT DOT AND FRONT FACE IN ACCORDANCE TO TABLE 2.
 6. CAVITY IDENT NUMBERS (SEE SHEET 2) ARE SHOWN FOR REFERENCE ONLY AND DO NOT APPEAR ON THE CONNECTOR.
 7. CONNECTOR VIEWS DEPICT THE 19 WAY VARIANT.
 8. CONTACTS ARE CRIMP STYLE AND WILL ACCEPT 24 TO 32 AWG SOLID OR STRANDED WIRE.
 9. INTERNAL CRIMP FERRULE PROVIDES A BRAID TRAP TERMINATION.
 10. CUSTOMERS MAY SPECIFY THEIR OWN CABLE ALTERNATIVELY ITT CAN PROVIDE STANDARD SHIELDED CABLE (DETAILS AVAILABLE ON REQUEST).
 11. OVERMOULDED STRAIN RELIEF IS SUPPLIED USING SYNTHETIC RUBBER WHEN THE STANDARD ITT CABLE IS USED, OTHERWISE ALTERNATIVE MATERIALS MAY BE SPECIFIED IF CUSTOMERS WISH TO USE DIFFERENT CABLES.

D	YELLOW
C	GREY
B	GREEN
A	RED
N	BLUE
KEYING ARRANGEMENT	COLOUR CODING

TABLE 2

11	CABLE	1	SEE NOTE 10	SEE NOTE 10	
10	BOOT, OVERMOULDED	1	SEE NOTE 11	SEE NOTE 11	
9	FERRULE	1	COPPER ALLOY	ELECTROLESS NICKEL	NOT SHOWN
8	CONTACT, MICRO, PIN	A/R	COPPER ALLOY	GOLD OVER NICKEL	
7	SPRING, CANTED	1	BERYLLIUM COPPER	GOLD OVER NICKEL	NOT SHOWN
6	SLEEVE	1	COPPER ALLOY	ELECTROLESS NICKEL	NOT SHOWN
5	INSULATOR, REAR	1	ALUMINIUM ALLOY	ANODIZED	NOT SHOWN
4	GROMMET	1	FLOUROSilICONE	NATURAL	NOT SHOWN
3	INSULATOR, FRONT	1	POLYESTER	NATURAL	
2	BARREL, COUPLING	1	STAINLESS STEEL	BLACK ELECTROLESS NICKEL	
1	SHELL, PLUG	1	STAINLESS STEEL	BLACK ELECTROLESS NICKEL	
Item	Description	Qty	Material	Finish	Notes



Material SEE COMPONENT DRAWINGS	Drawing Tolerance Unless Otherwise Stated Metric: X = ±0.40, XX = ±0.20, XXX = ±0.10 Imperial: X or XX = ±0.020, XXX = ±0.010, XXXX = ±0.005	Angles X° = ±2°, XX° = ±0.5°
Finish SEE COMPONENT DRAWINGS	This is issued in strict confidence on condition that it is not used as a basis for manufacture or sale and that it is not copied printed or disclosed to a third party either wholly or in part without the prior written consent of ITT Corporation © 12-Oct-07 All rights reserved.	
Treatment N/A	DO NOT SCALE / IF IN DOUBT ASK	

Dimensions are in INCHES
Surface Finish ✓

ITT
JAYS CLOSE,
VIABLES INDUSTRIAL ESTATE,
BASINGSTOKE UK RG22 4BA

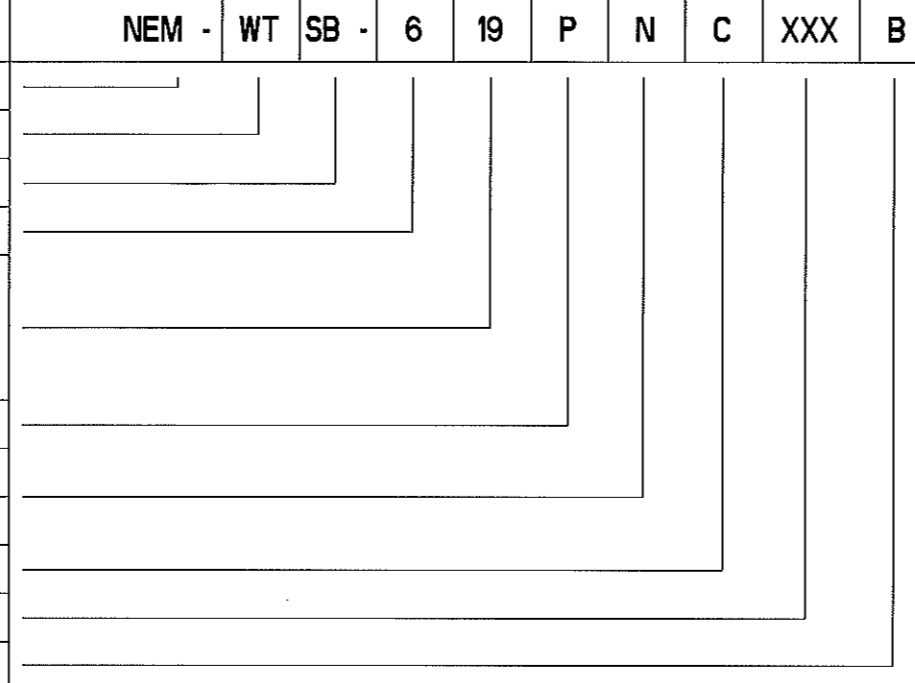
Total Vol : INCHES ³	Total Surf Area : INCHES ²
Calculated Mass : Not Available grams	Title: CUSTOMER USE DRAWING. NEMESIS WTSB PLUG CONNECTOR 7, 14 & 19 WAY, SNAP-ON/BREAKAWAY COUPLING
Drg No. CU76245Y	Original Scale 3.500 Sheet 1 of 2

A	BAS40277	JS	07-JUN-11	SS
2	UPDATED	MDS	25-Mar-10	----
Rev	ECO / DCN Details	Drawn	Date	Chk'd

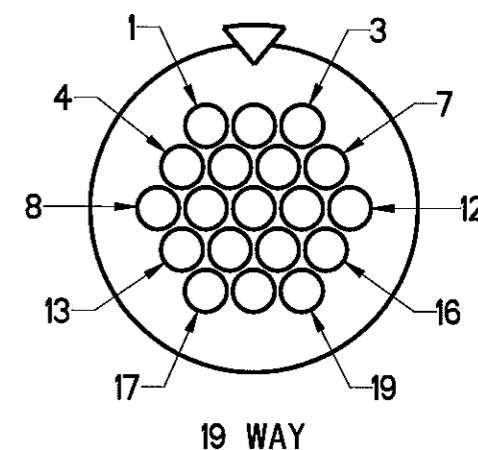
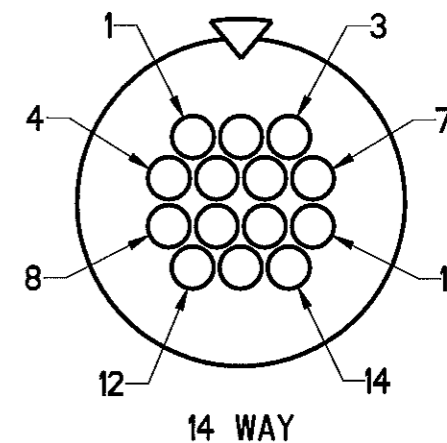
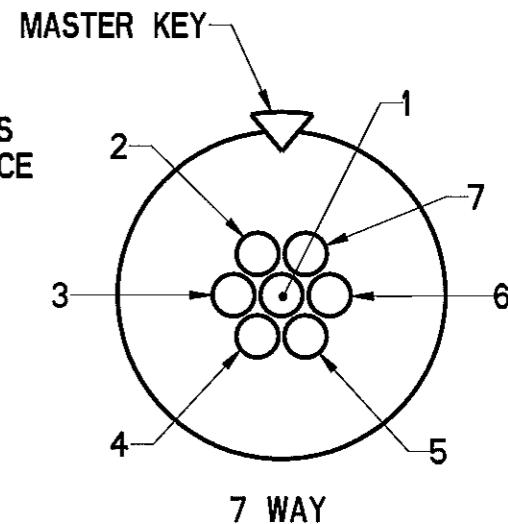
2-4-08 Rev E

CONNECTOR ORDERING NOMENCLATURE

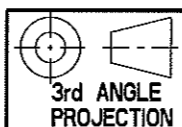
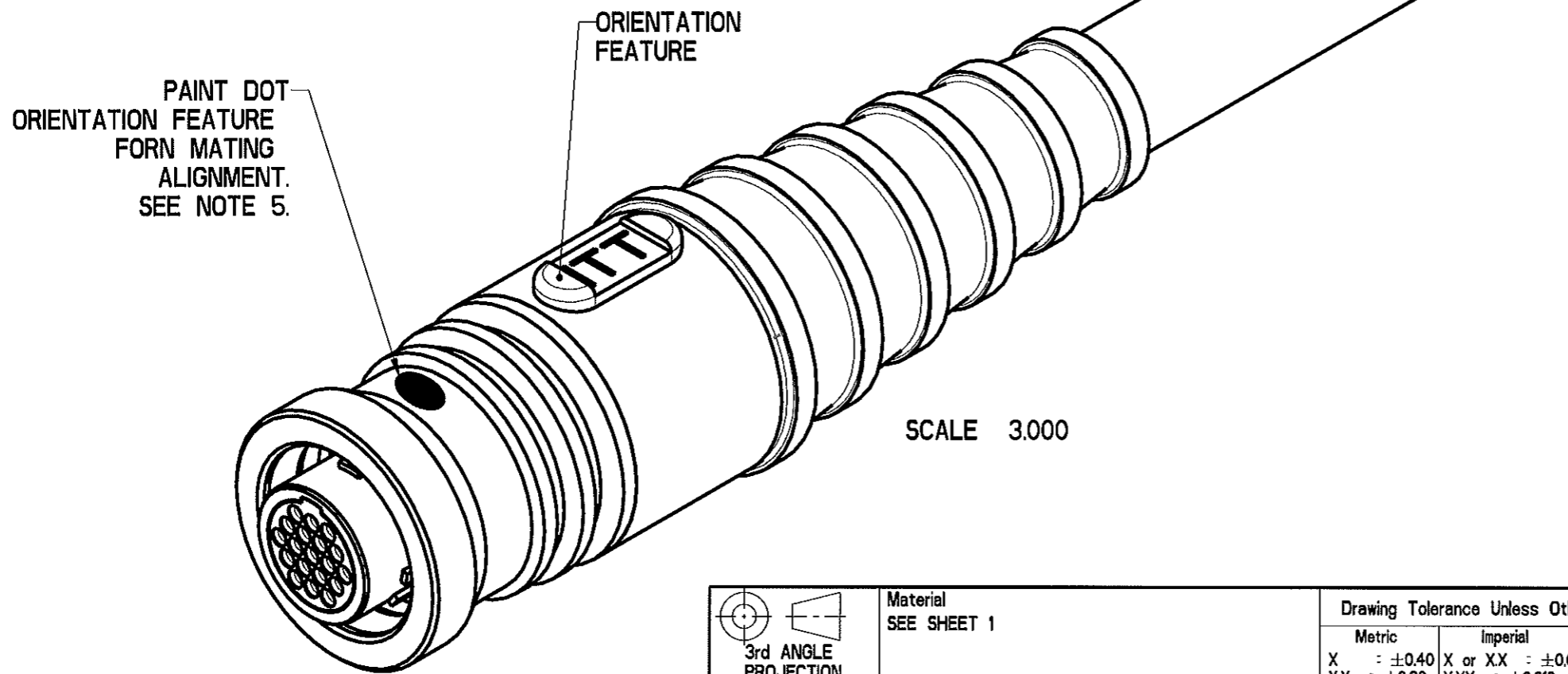
TITLE	DESIGNATOR	DESCRIPTION
PRODUCT	NEM	NEMESIS
SERIES	WT	WATER TIGHT
COUPLING STYLE	SB	SNAP ON/BREAKAWAY
SHELL STYLE	6	FREE PLUG
CONTACT ARRANGEMENT	7	
	14	
	19	
CONTACT TYPE	P	PIN CONTACTS
KEY ORIENTATIONS	N	NORMAL
	A,B,C & D	ALTERNATIVES
TERMINATION TYPE	C	(a)
TERMINATION CODE	XXX	(b)
FINISH	B	BLACK ELECTROLESS NICKEL



STANDARD CONTACT LAYOUTS VIEWED FROM THE MATING FACE



(a) SEE NOTE 8, SHEET 1.
 (b) 3 DIGIT NUMERICAL CODE ALLOCATED BY ITT TO SPECIFY ITT OR CUSTOMER CABLE VARIANTS.



Material
SEE SHEET 1

Unless Otherwise Stated Remove Burrs and Break Sharp Edges 0.13 mm max.

Finish
SEE SHEET 1

Treatment
N/A

Drawing Tolerance Unless Otherwise Stated

Metric	Imperial	Angles
X : ±0.40	X or XX : ±0.020	X° : ±2°
XX : ±0.20	XXX : ±0.010	XX° : ±0.5°
XXX : ±0.10	XXXX : ±0.005	

Dimensions are in INCHES

Surface Finish



Total Vol : INCHES³
 Total Surf Area : INCHES²
 Calculated Mass : Not Available grams

Title: CUSTOMER USE DRAWING. NEMESIS WT PLUG CONNECTOR 7, 14 & 19 WAY, SNAP-ON/BREAKAWAY COUPLING

Drg No. CU76245Y

Original Scale 3.500 Sheet 2 of 2

This is issued in strict confidence on condition that it is not used as a basis for manufacture or sale and that it is not copied printed or disclosed to a third party either wholly or in part without the prior written consent of ITT Corporation © 28-May-09 All rights reserved.



SEE SHEET 1	MDS	SS
Rev ECO / DCN Details	Drawn	Date
	Chk'd	

Ref DO NOT SCALE / IF IN DOUBT ASK