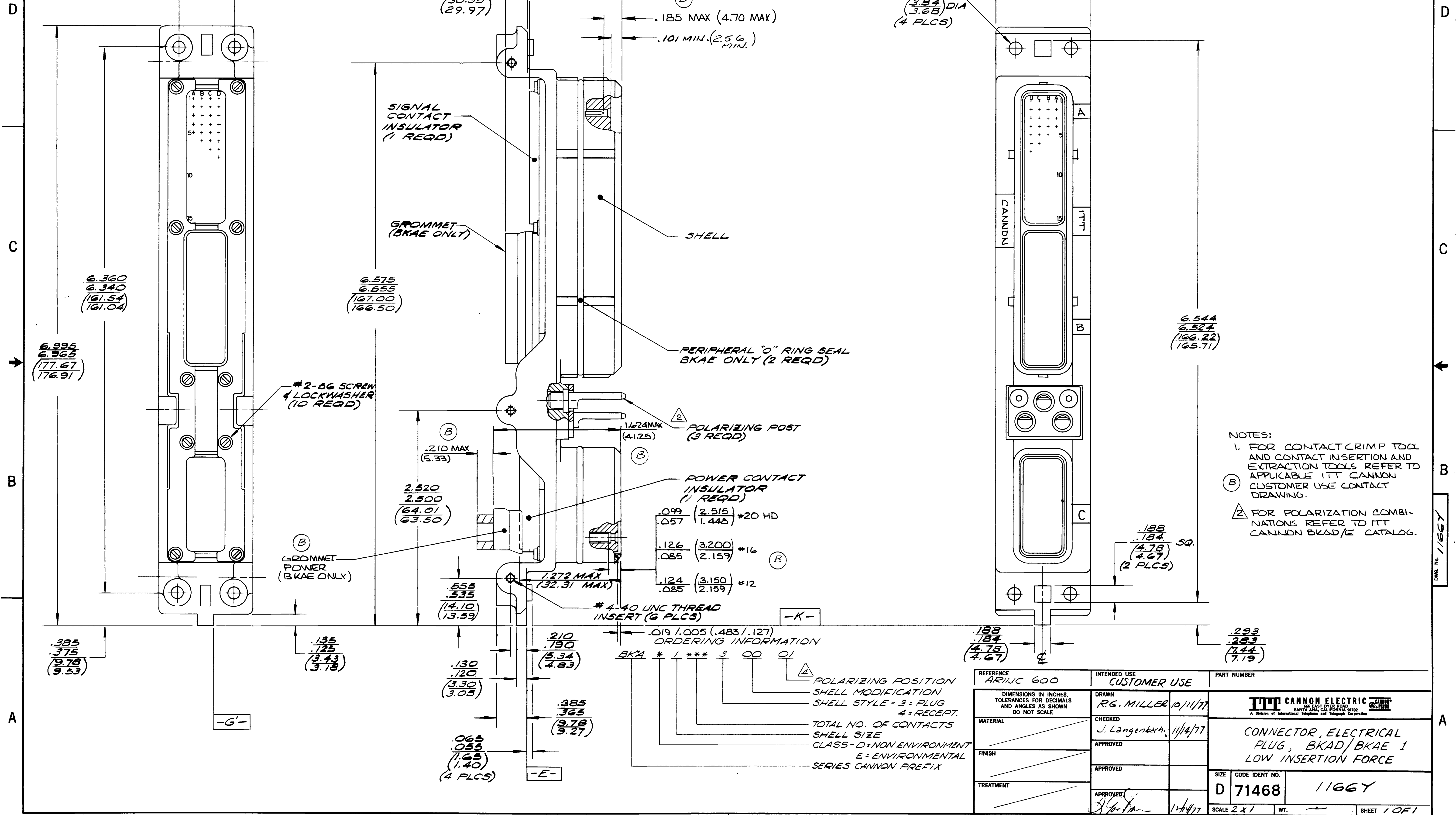


THIS IS ISSUED IN STRICT CONFIDENCE ON CONDITION THAT IT IS NOT USED AS A BASIS FOR MANUFACTURE OR SALE, AND THAT IT IS NOT COPIED, REPRINTED OR DISCLOSED TO A THIRD PARTY EITHER WHOLLY OR IN PART WITHOUT THE PRIOR WRITTEN CONSENT OF ITT CANNON ELECTRIC.

REVISIONS				
ZONE	LTR	DESCRIPTION	DATE	APPROVED
A		REVISED PER DCN 109347 RSM	1-9-78	TK
B		REVISED PER DCN 110205 PDH	8-3-79	PL



NOTES:  
 1. FOR CONTACT CRIMP TOOL AND CONTACT INSERTION AND EXTRACTION TOOLS REFER TO APPLICABLE ITT CANNON CUSTOMER USE CONTACT DRAWING.  
 (B) FOR POLARIZATION COMBINATIONS REFER TO ITT CANNON BKAD/E CATALOG.

REFERENCE ARINC 600	INTENDED USE CUSTOMER USE	PART NUMBER
DIMENSIONS IN INCHES, TOLERANCES FOR DECIMALS AND ANGLES AS SHOWN DO NOT SCALE	DRAWN R.G. MILLER 10/11/77	
MATERIAL	CHECKED J. Langenbergh 11/14/77	
FINISH	APPROVED	CONNECTOR, ELECTRICAL PLUG, BKAD/BKAE 1 LOW INSERTION FORCE
TREATMENT	APPROVED	SIZE CODE IDENT NO. D 71468 1166Y
	APPROVED	SCALE 2 x 1 WT. SHEET 1 OF 1

CEC2550 HQ (REV. 6-66)

EXPORT CODE C

This document contains technical data that is subject to export controls under the Export Administration Act and Export Administration Regulations (15 CFR 70, et seq.). Any transfer of this data to non-US persons or to any location outside the United States must be in compliance with the Export Administration Regulations.

REDUCED VELLUM IN FILE