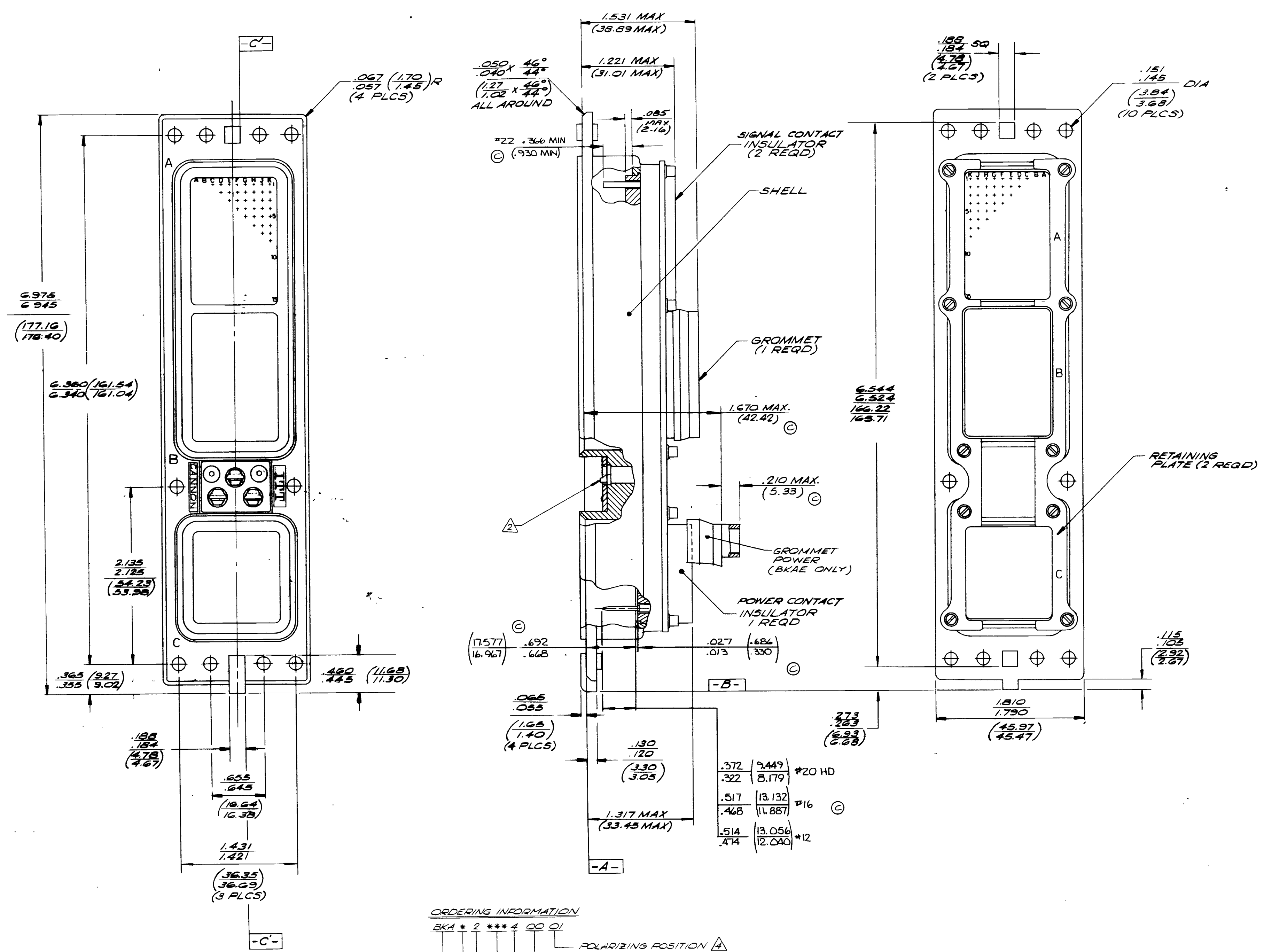


THIS IS ISSUED IN STRICT CONFIDENCE ON CONDITION THAT IT IS NOT USED AS A BASIS FOR MANUFACTURE OR SALE, AND THAT IT IS NOT COPIED, REPRODUCED OR DISCLOSED TO A THIRD PARTY EITHER WHOLLY OR IN PART WITHOUT THE PRIOR WRITTEN CONSENT OF ITT CANNON ELECTRIC.

REVISIONS				
LTR	DESCRIPTION	DFTM	DATE	APPROVED
A	CORRECTED MARKING ERROR DCN 107049	RL	1/3/78	RL
B	REVISED PER DCN 103547	RL	1/17/77	RL
C	ADDED 1.670 MAX., .210 MAX REMOVE NOTE 14.2, REVISE NOTE 3, RENUMBER NOTES DCN 110'05	P.S.	8/3/79	P.S.



NOTES:  
 ① FOR CONTACT CRIMP TOOL AND CONTACT INSERTION & EXTRACTION TOOLS REFER TO APPLICABLE ITT CANNON CUSTOMER USE CONTACT DRAWINGS  
 △ FOR POLARIZATION COMBINATIONS REFER TO ITT CANNON BK4D/E CATALOG

ORDERING INFORMATION  
 BK4 \* 2 \*\*\* 4 00 01  
 △ POLARIZING POSITION  
 SHELL MODIFICATION  
 SHELL STYLE -3 = PLUG  
 -4 = RECEPTACLE  
 TOTAL NO. OF CONTACTS  
 SHELL SIZE  
 CLASS -D = NON ENVIRONMENTAL  
 E = ENVIRONMENTAL  
 SER IS CANNON PREFIX

REFERENCE PRINC 600	INTENDED USE CUSTOMER USE	PART NUMBER
UNLESS OTHERWISE SPECIFIED DIMENSIONS ARE IN INCHES TOLERANCE ON DECIMALS ANGLES XX ± .03 XXX ± .005 DO NOT SCALE DRAWING	DRAWN R.G. MILLER 11-11-77 CHECKED J. Langensack 11-18-77 APPROVED	ITT CANNON ELECTRIC CONNECTIONS DIVISION 1000 WEST 12TH AVENUE DENVER, COLORADO 80202
MATERIAL	TITLE CONNECTOR, ELECTRICAL RECEPTACLE, BK4D/BK4E 2 LOW INSERTION FORCE	DWG CODE IDENT NO E 71468
DASH NO. NEXT ASSY USED ON APPLICATION	FINISH	DWG NO. 1169Y SCALE 2/1